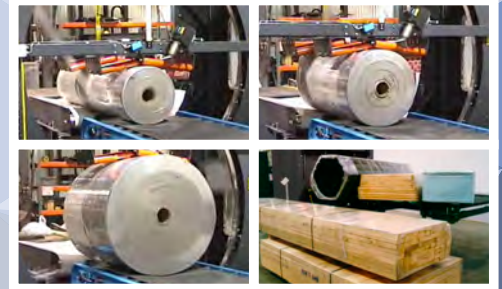


WULFTEC® STRETCH WRAPPERS WRWA-200 Horizontal



WULFTEC

A DURAVANT COMPANY



*Productivity at speeds
up to 60 RPM¹*

WULFTEC RETHINKS HORIZONTAL WRAPPING

The new, improved way to wrap carpets, copper piping, corrugated, doors, lumber, magazines, textiles, tubing, windows... and more.

Economical

Maximize the use of stretch film. The WRWA's NO-THREAD® Powered Pre-Stretch Carriage optimizes film performance, using less film without compromising wrapping strength. Contrary to the competition, light gauge film may be used with this machine. State-of-the-art AC variable frequency drives ensure low maintenance, saving valuable time and money. Troubleshooting is easy, with quick identification by the digital panel interface.

Easy to operate

The WRWA-200 carriage features a loading clamp and rapid-lock film roll device that make loading a snap. Everything can be done in the same area, with easy access to the carriage for simplified re-loading. Maintenance free clamping and cutting device. The user-friendly digital panel interface offers multiple mode selection for more flexibility. Just set, load and go!

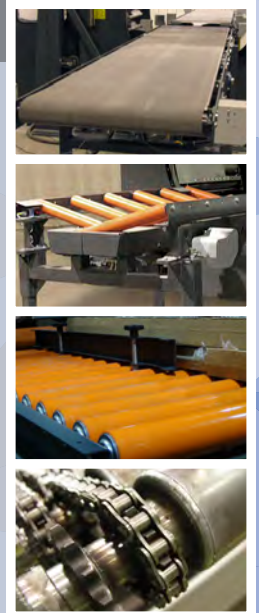
Crafted for success

For increased productivity, this quality engineered stretch wrapper features:

- A precise heavy-duty ring bearing belt drive system
- Wireless technology used for reduced maintenance

The Wulftec promise

Having a Wulftec stretch wrapping machine on the production line is a powerful statement. It's an investment in strong values, because Wulftec is dedicated to manufacturing only the best. It's an investment in all-steel construction, for increased stability and strength. It's an investment in success, because Wulftec equipment is designed and built to work hard.



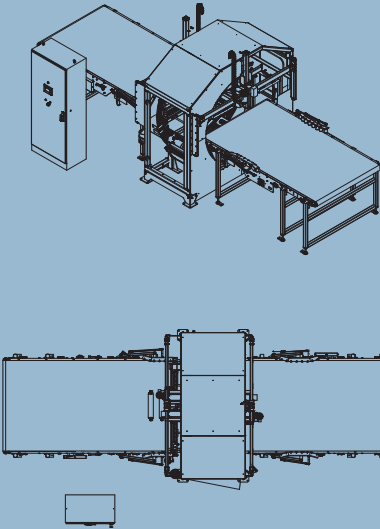
WWW.WULFTEC.COM

WE FEAR NO PACKAGING CHALLENGE

Technical Specifications

WRWA-200

Production Rate ¹	Up to 120 loads per hour
Load Weight	Maximum load weight limited to conveyor capacity
Load Size	Maximum diagonal load dimension must be 8" (4" on each side) shorter than ring size
Machine Dimensions	Machine dimensions depending on ring size
Electrical Requirements	230V/3/60 20A
Pneumatic Requirements	Up to 6 CFM @ 80 PSI; comes with Filter/Regulator
Film Delivery System	<ul style="list-style-type: none"> 20" NO-THREAD[®] powered pre-stretch carriage with revolutionary spring loaded carriage gate Rapid-lock film roll device
Available Ring Sizes	36, 48, 60, 72, 90 or 102 inches diameter
Options	<ul style="list-style-type: none"> Top hold down Side guides Transformer Heat seal Bridge conveyors Dual bridge conveyor Conveyors (belt, chain, rollers, gravity)
Structure	<ul style="list-style-type: none"> Heavy-duty structural steel construction Ergonomically friendly film loading carriage position
Warranty	<ul style="list-style-type: none"> 3-year unlimited cycle warranty 3-year warranty on ring bearing 10-year warranty on steel structure Lifetime warranty on pre-stretch rollers' blue compound



Reduced energy usage by throughput anticipation: Conveyorized automatic machines will operate at a lower speed when the throughput from the line is slower and speed up to allow production bursts. For an average production line², the energy savings would equal 20 x 40 watt lamps lit for 6 hours!

Reduced film waste by optimized resolution: We use a higher resolution positioning system to deliver the film in a more accurate quantity. This means an average film reduction of 4 feet of film per pallet when compared to other control systems! That's 60 miles² of unstretched film per year!

Reduced general waste by better product protection for handling and transport: With very low wrap capability, the product is properly secured to the pallet, resulting in a pallet that is more stable for transport and therefore less damage!

Reduced electricity consumption: By using variable frequency drives on all its motors, Wulftec ensures that only the power required by the load is used, regardless of the HP of the motor. By this, we have standardized our motor sizes, allowing for less parts in inventory for us and our customers. This translates into greener operations at our end and at your end.



1. Production rate based on load and machine size and configuration
2. Based on a production rate of 60 pallets per hour, 2 shifts, where 50% of the production is in "peak-mode", 250% pre-stretch

All machine specifications are subject to change without prior notice / Nominal dimensions shown
WRWA-200 shown with optional conveyors



WULFTEC

A DURAVANT COMPANY

Wulftec International Inc.

209 Wulftec, Ayer's Cliff, Quebec, Canada J0B 1C0

Toll free: 877.WULFTEC (985.3832)

Phone: 819.838.4232

Fax: 819.838.5539

Email: wulftec@wulftec.com



WULFTEC IS A MEMBER OF THE DURAVANT FAMILY OF COMPANIES

PACKAGING SOLUTIONS | FOOD PROCESSING SOLUTIONS | MATERIAL HANDLING SOLUTIONS | SUPPORTPRO

www.duravant.com