

CS 2 UNI



**AIR
Operated**

**Self
Regulating
Pressure**

**Very
Large
Stroke**

**Aluminium
structure**

**Fast &
Easy
to use**

Type of wedges

The CS 2 UNI works only with "UNI" wedges.

**UNI
wedges**

Designed for

Bespoke Framer | Retail Framer | Medium Contract Framer | Volume Contract Framer



Mouldings

Width
Height

5 mm - unlimited
7 mm - 100 mm

Dimensions

Length
Width
Height

610 mm
360 mm
1200 mm

Weight

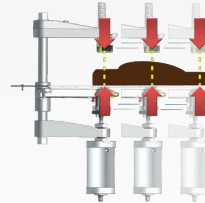
23 kg

Air supply

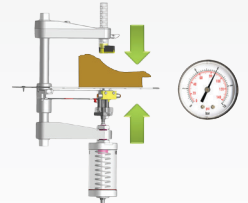


6 bars using
1,5L / cycle

The Smart Wedge Drive System™ : only available from Cassese



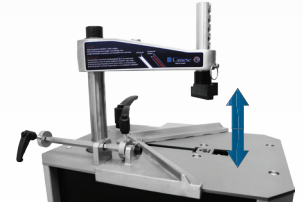
Perfect Alignment :
Eliminates the need to adjust
top clamp placement



Perfect Pressure :
Eliminates the need to
adjust air pressure between
Hardwood and Softwood



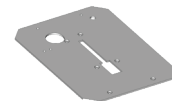
Wide mouldings:
14cm / 6" stroke



High mouldings:
10cm / 4"



Aluminium
structure & parts for
maximum durability and
minimum wear and tear



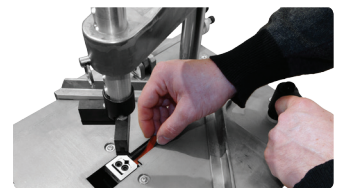
Stainless Steel
working table



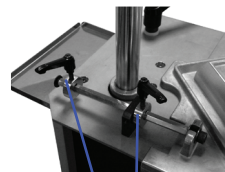
Adjustable
rod clamp

Solid crossbar

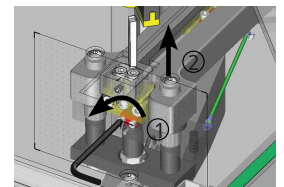
Magnetic
Chevron
clamp



Easy wedge loading



Quick and easy wedge
positioning



2-stage quick & easy wedge
driver replacement

Included accessories



Optional accessories

